

Figure 1. Global tropospheric column amount (molecules/cm²) of NO₂ for the month of September 1997 derived from GOME data. Elevated levels of NO₂ can be seen over the industrial areas of Europe, the United States, China, and the Middle East oil fields. The production of NO₂ from biomass burning in the southern hemisphere and its long range transport is also evident. Source: J. P. Burrows, personal communication, and Burrows (1999).

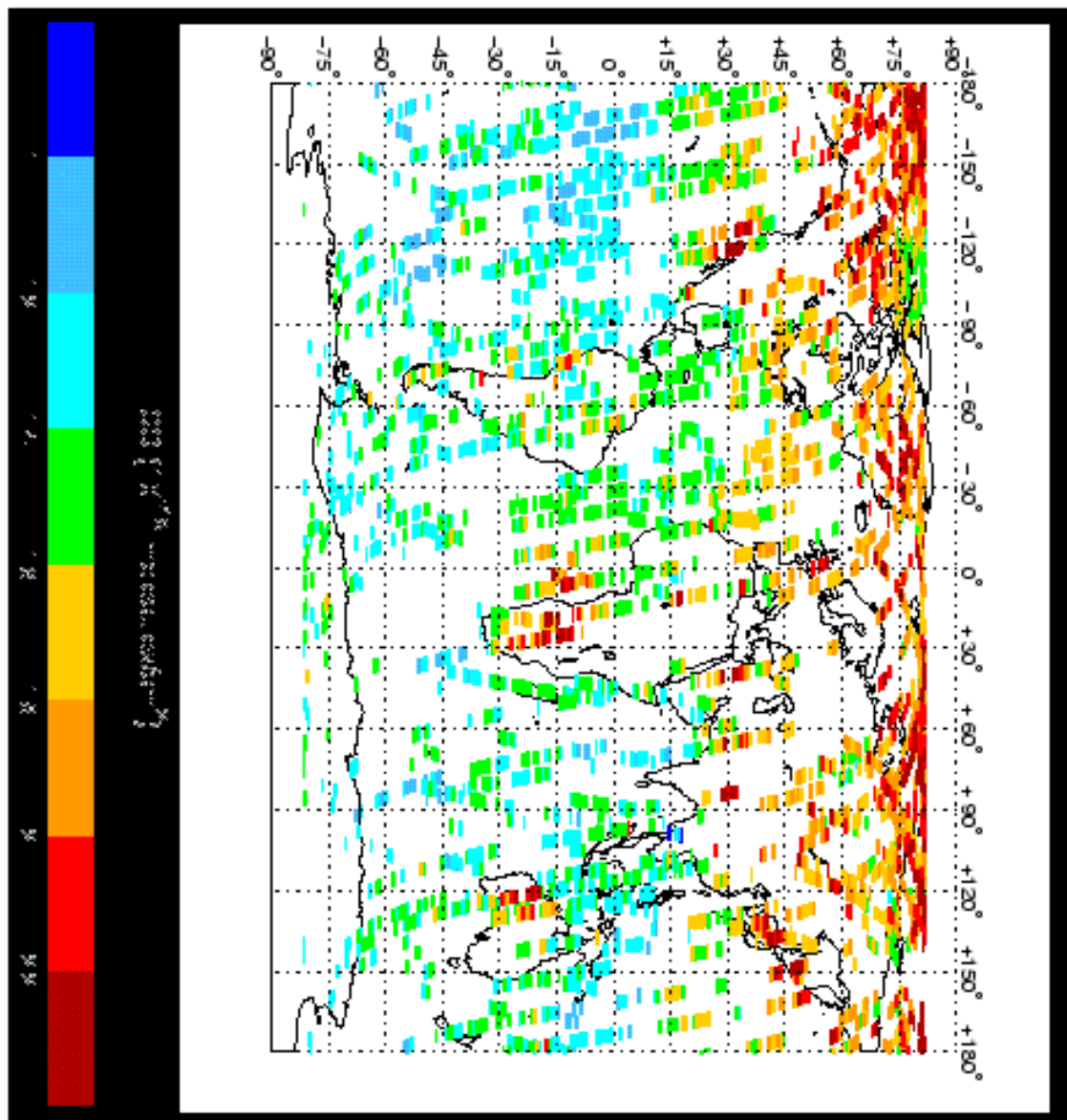


Figure 2. Global distribution of CO total column for June 16-19, 1997 as retrieved from cloud-filtered IMG spectra. Dots corresponding to the measured pixels were enlarged on the plot for clarity. Source: C. Clerbaux, personal communication.

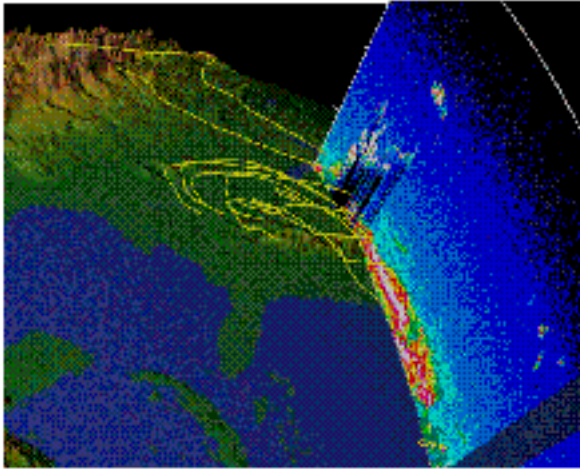


Figure 3. Vertical cross-section of aerosol distribution observed by LITE. A deep haze layer (yellow and red) is seen over the eastern US and extending into the Atlantic Ocean. Yellow lines trace wind back-trajectories at the 850 mb level over the 5 days previous to the LITE overpass.